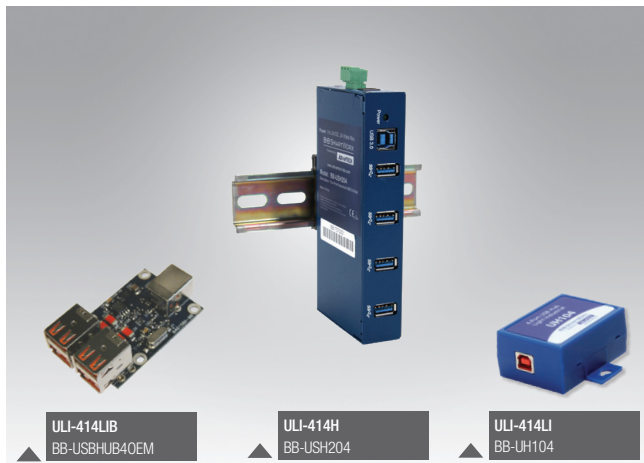


ULI-414LIB
ULI-414LI
ULI-414I
ULI-417I
ULI-414CI
ULI-417CI
ULI-414H
ULI-417H

BB-USBHUB40EM
BB-UH104
BB-UHR204
BB-UHR207
BB-UHR304
BB-UHR307
BB-USH204
BB-USH207

Industrial USB 2.0 & 3.0 Hubs



Features (model dependent)

- Expand one USB port to 4 or 7 USB ports
- USB 2.0 & USB 3.0
- ESD protection
- High retention USB connectors grip cables tight
- Wide operating temperature (USB 2.0 hubs)
- USB host port power or external PSU power
- Metal or plastic enclosures – desk, panel, DIN rail mount
- 4 kV isolation between upstream & downstream ports (models ULI-414CI, ULI-417CI)
- Compact, OEM open bare-board hub (model ULI-414LIB)



Introduction

These Advantech USB 2.0 and 3.0 hubs are more robust than office-grade hubs. Isolation and ESD protections are ideal for electrically harsh environments. "High Retention" USB connectors hold standard USB cables tight – requiring up to 1.54 kg (3.4 lb) force to disconnect them. Model ULI-414LIB is suitable for OEM applications where space is limited and/or external packaging is not required. ULI-414H and ULI-417H feature SuperSpeed USB 3.0 with data rates up to 5 Gbps and 900 mA downstream power to connected peripherals.

Specifications

USB Technology

Model #:	Upstream Port:	Downstream Ports:	Data Rate, each port:	Standards:
ULI-414LIB*	(1) High retention, Type B female	(4) High retention, Type A female	1.5, 12, 480 Mbps	2.0, 1.1 (backward compatible)
ULI-414LI		(4) High retention, Type A female		
ULI-414I		(4) High retention, Type A female		
ULI-417I		(7) High retention, Type A female	12 Mbps** +	
ULI-414CI		(4) High retention, Type A female		
ULI-417CI		(7) High retention, Type A female		
ULI-414H [‡]	(1) Type B	(4) Type A	Up to 5 Gbps	SuperSpeed 3.0 (2.0, 1.1 backward compatible)
ULI-417H [‡]		(7) Type A		

* When installed, ULI-414LIB appears as an unbranded USB hub.
 ** Isolation limits speed to 12 Mbps. (ULI, 414CI, ULI417CI)
 + Multi-transaction translator, 1 per port. (ULI, 414CI, ULI417CI)
 ‡ Supports xHCI USB controller. (ULI-414H, ULI-417H)

Isolation & ESD Protections

Model #:	Optical Isolation:	ESD Protection:	Surge Protection:	
ULI-414LIB	-	15 kV air, 8kV contact	± 0.5 kV DC ports, ± 1 kV signal ports	
ULI-414LI				
ULI-414I				
ULI-417I				
ULI-414CI				4 kV
ULI-417CI				
ULI-414H	-	8 kV air	600 W	
ULI-417H				

Environmental

Model #:	Operating Temperature:	Storage Temperature:	Relative Humidity:	
ULI-414LIB	-40 to +80 °C	-40 to +85 °C	0 to +95%, non-condensing	
ULI-414LI				
ULI-414I				
ULI-417I				
ULI-414CI				-40 to +80 °C (0 to +40 °C using wall plug PSU)
ULI-417CI				
ULI-414H	0 to +40 °C	-20 to +50 °C	0 to +85%, non-condensing	
ULI-417H				

Power

Model #:	Source:	Input Voltage:	Connection:	Consumption:	Downstream, per port:	
ULI-414LIB	USB port [†]	5 Vdc	—	2.5 W, max.	100 mA	
ULI-414LI			—			
ULI-414I	USB port [†] OR external PSU	UBS port: 5 Vdc External PSU: 10-30 Vdc	Terminal Block	16 W	500 mA	
ULI-417I			(3 pos., 5.08 mm spacing, 28-12 AWG, solid wire) OR Barrel Jack (locking, threaded, 5.5mm, center positive)	30 W		
ULI-414CI				16 W		
ULI-417CI			External PSU (required, not included)	External PSU: 10-30 Vdc	30 W	900 mA
ULI-414H [‡]					9-24 Vdc (redundant, TB input)	
ULI-417H [‡]			36 W			

[†] Check device to ensure USB bus power is adequate. If more power is required, Advantech offers external powered hubs.
[‡] Power LED indicator.

Mechanical

Model #:	Enclosure:	Mounting:	Dimensions, mm:	Weight, gm:	USB Cable:
ULI-414LIB	Open board	OEM	34 x 60 x 17	22.7	Not included [‡]
ULI-414LI	IP30 Plastic	Panel #	65 x 61 x 27 [§]	49.9	
ULI-414I	IP30 metal (LEDs for Power, Port Ready)	Desk, DIN rail, panel #	168.2 x 86.3 x 35.1 [§]	64.0	Included, 1.8m
ULI-417I			233.2 x 119.4 x 35.1 [§]		
ULI-414CI			168.2 x 86.3 x 35.1 [§]		
ULI-417CI			233.2 x 119.4 x 35.1 [§]		
ULI-414H	Industrial grade, metal	DIN rail, panel	119.4 x 218.6 x 35.0	600	Included, 2.0 m
ULI-417H				620	

[#] Mounting kit included.
[§] Enclosure with brackets.
[‡] A standard USB cable is required to connect to PC.

Meantime Between Failures (MTBF)

- Calculation Method: MIL217F Parts Count Reliability Prediction

Model #:	Hours:	Model #:	Hours:
ULI-414LIB	552747	ULI-414CI	143330
ULI-414LI		ULI-417CI	151173
ULI-414I	190999	ULI-414H	588858
ULI-417I	211773	ULI-417H	935103

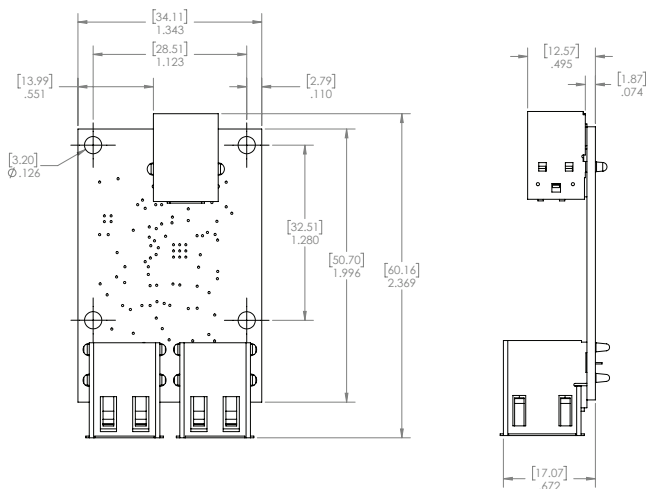
ULI-414LIB BB-USBHUB40EM
ULI-414LI BB-UH104
ULI-414I BB-UHR204
ULI-417I BB-UHR207
ULI-414CI BB-UHR304
ULI-417CI BB-UHR307
ULI-414H BB-USH204
ULI-417H BB-USH207

Regulatory/Approvals/Certifications

Model #:	Approvals:	CE Directives:	CE Standards:	Standards - other:
ULI-414LIB	FCC			EN 61000-6-1 – Generic Immunity Standard for Residential, Commercial and Light-industrial Environments
ULI-414LI				
ULI-414I	FCC, UL C1/D2	2014/30/EU – Electromagnetic Compatibility	EMC: EN 55032 Class B – Electromagnetic Compatibility of Multimedia Equipment – Emissions Requirements	EN 61000-6-1 – Generic Immunity Standard for Residential, Commercial and Light-industrial Environments
ULI-417I	FCC, KCC, UL C1/D2			
ULI-414CI	FCC, UL C1/D2	2011/65/EU amended by (EU) 2015/863 – Reduction of Hazardous Substances (RoHS)	EN 55024 – Information Technology Equipment – Immunity Characteristics – Limits and Methods of Measurement	EN 61000-6-3 +A1 – Generic Emissions Standard for Residential, Commercial and Light-industrial Environments (Class B)
ULI-417CI	FCC, KCC, UL C1/D2			
ULI-414H	FCC Class B, CE, KCC	2012/19/EU – Waste Electrical and Electronic Equipment (WEEE)	EMC: EN 55032 Class A – Electromagnetic Compatibility of Multimedia Equipment – Emission Requirements	
ULI-417H				
			EN 55024 – Information Technology Equipment – Immunity Characteristics – Limits and Methods of Measurement	

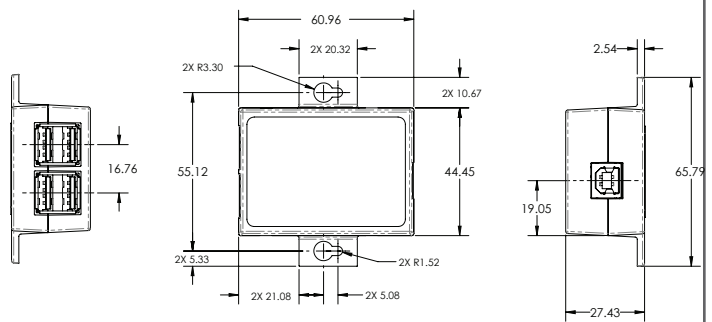
Dimensions - ULI-414LIB

Unit = mm / in



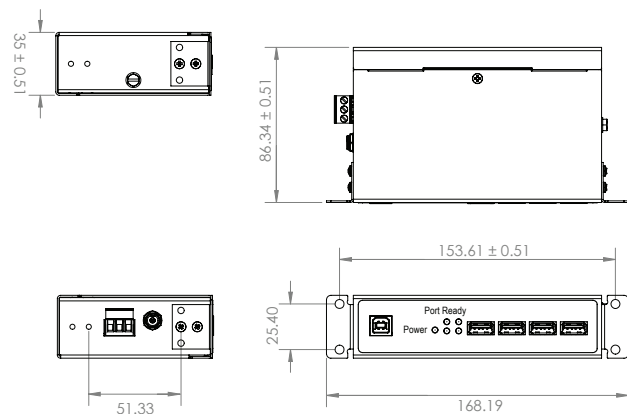
Dimensions - ULI-414LI

Unit = mm



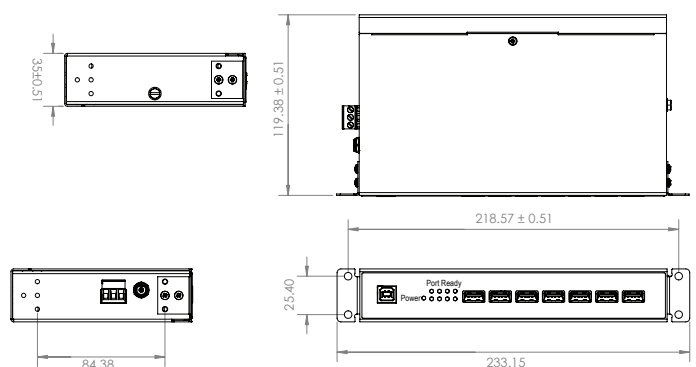
Dimensions - ULI-414I, ULI-414CI

Unit = mm



Dimensions - ULI-417I, ULI-417CI

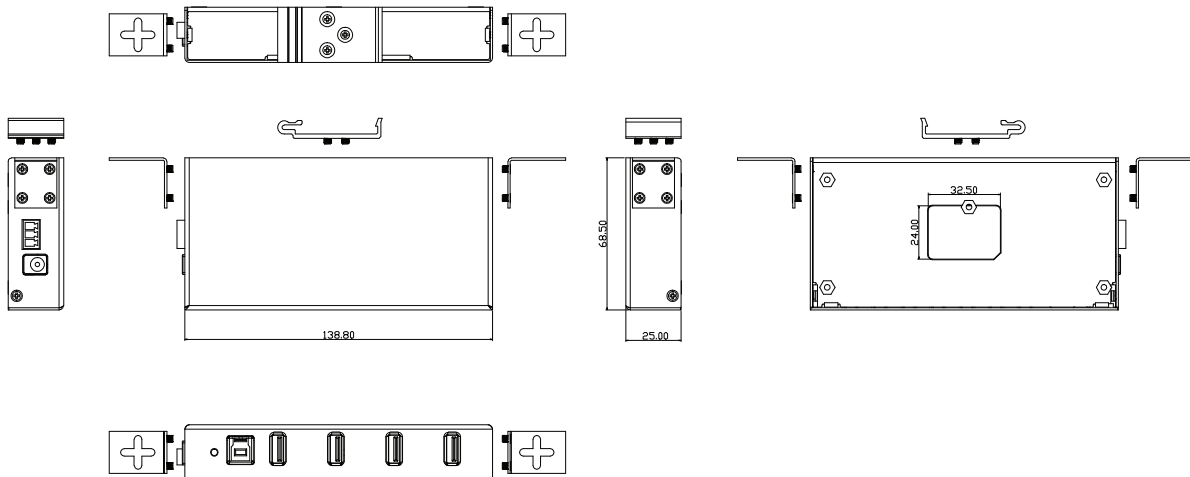
Unit = mm



ULI-414LIB	BB-USBHUB4OEM
ULI-414LI	BB-UH104
ULI-414I	BB-UHR204
ULI-417I	BB-UHR207
ULI-414CI	BB-UHR304
ULI-417CI	BB-UHR307
ULI-414H	BB-USH204
ULI-417H	BB-USH207

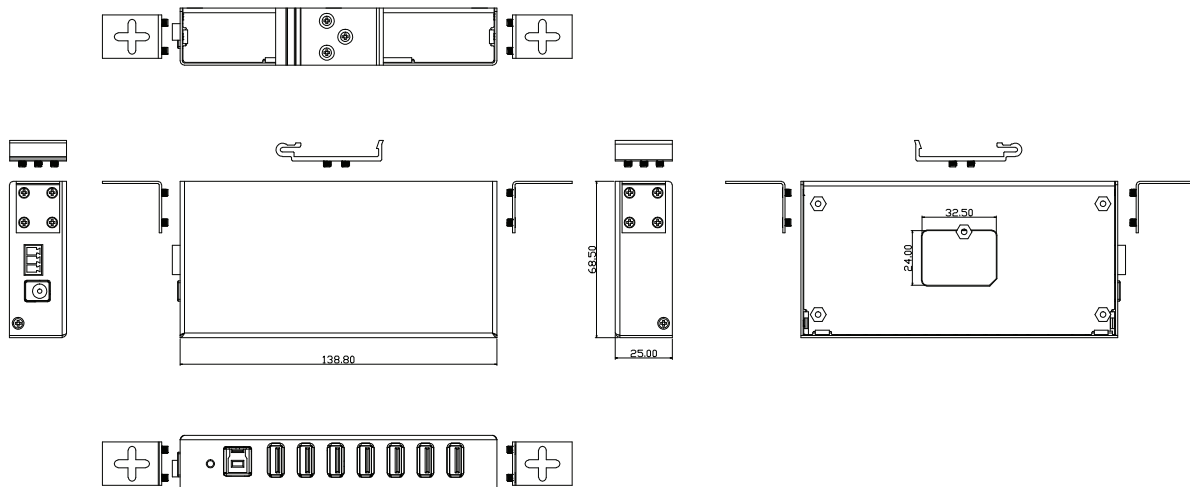
Dimensions - ULI-414H

Unit = mm



Dimensions - ULI-417H

Unit = mm



Ordering Information

Model Number	Part Number to Order	Description
ULI-414LIB	BB-USBHUB4OEM	Industrial USB 2.0 Hub, 4-port, OEM open board module, High retention USB ports, USB port power. (USB cable required.)
ULI-414LI	BB-UH104	Industrial USB 2.0 Hub, 4-port, High retention USB, USB port power. (USB cable required. Mounting kit included.)
ULI-414I	BB-UHR204	Industrial USB 2.0 Hub, 4-port, High retention USB, USB or PSU power. (1.8m USB cable & mounting kit included; PSU sold separately.)
ULI-417I	BB-UHR207	Industrial USB 2.0 Hub, 7-port, High retention USB, External power. (1.8m USB cable & mounting kit included; PSU sold separately.)
ULI-414CI	BB-UHR304	Industrial USB 2.0 Hub, 4-port, High retention USB, 2kV Isolation, External power. (1.8m USB cable & mounting kit included; PSU sold separately.)
ULI-417CI	BB-UHR307	Industrial USB 2.0 Hub, 7-port, High retention USB, 2kV Isolation, External power. (1.8m USB cable & mounting kit included; PSU sold separately.)
ULI-414H	BB-USH204	Industrial USB 3.0 Hub, 4-port, USB or PSU power. (2m USB cable included; PSU sold separately.)
ULI-417H	BB-USH207	Industrial USB 3.0 Hub, 7-port, External power. (2m USB cable included; PSU sold separately.)

