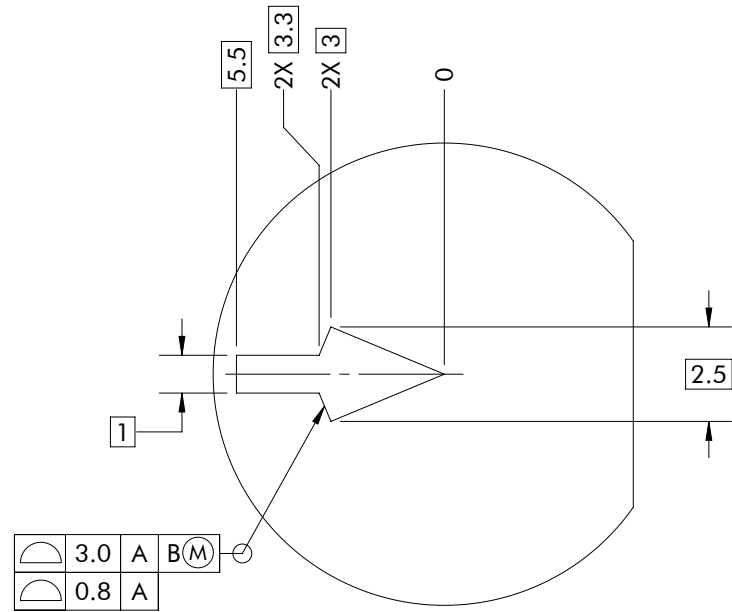


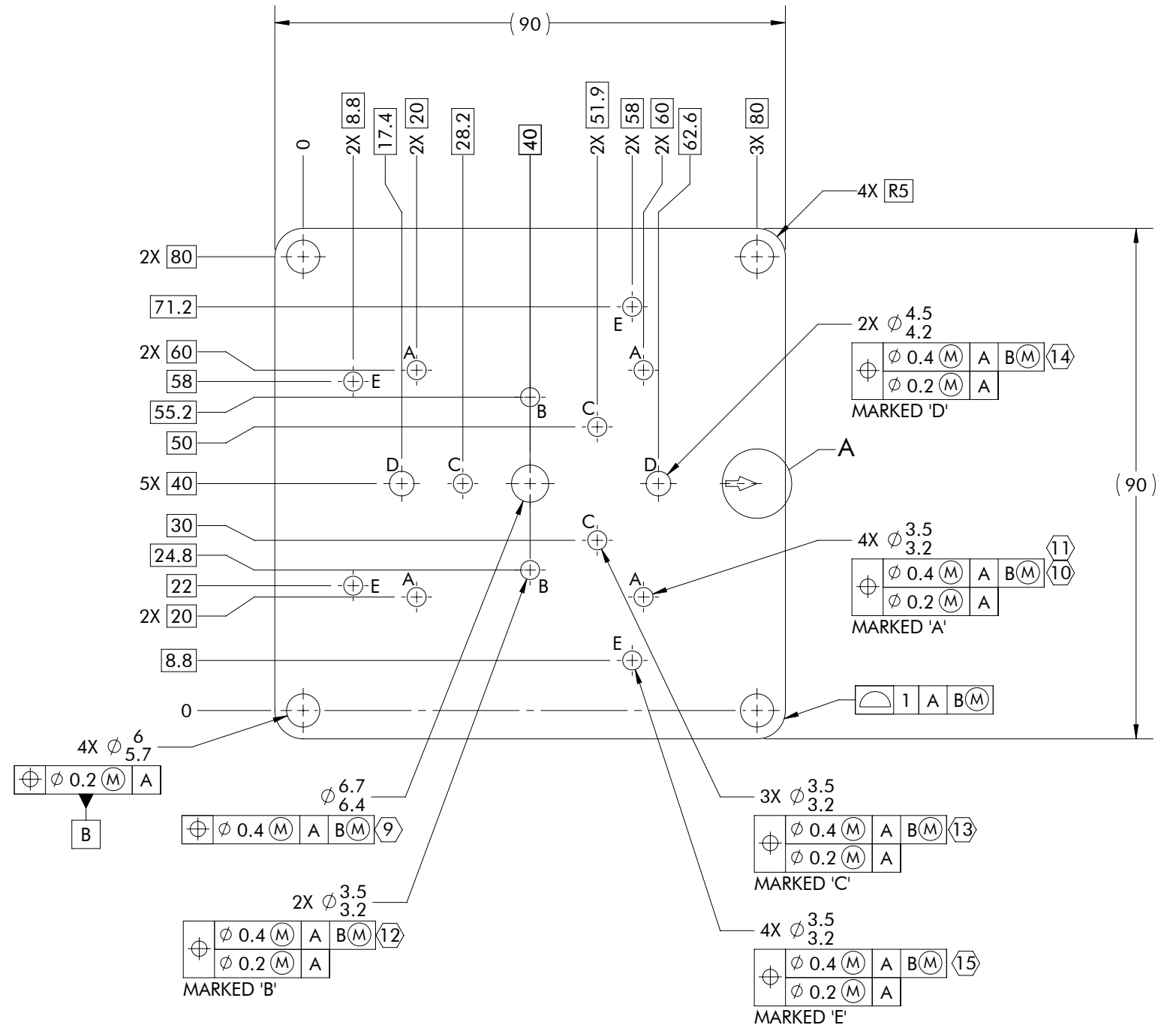
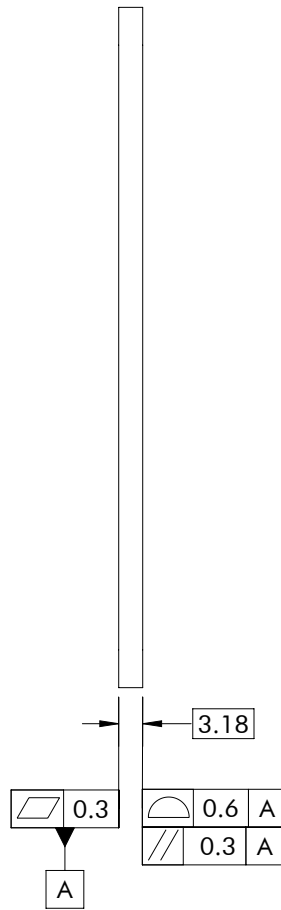
NOTES:

- ITEM MATERIAL SHALL BE ALUMINUM ALLOY, ALUMINIUM ASSOCIATION TYPE 5052 OR 6061
- SURFACES SHALL BEAR ANODIC COATING OR POWDER COATING
- ANODIC COATING SHALL BE IN ACCORDANCE WITH MIL-A-8625, TYPE II CLASS 2, COLOUR BLACK
- POWDER COATING SHALL BE CURED, TIGER DRYLAC 39/80200, MATTE, FINE TEXTURE, COLOUR BLACK
- DIMENSIONAL REQUIREMENTS APPLY AFTER COATING
- EXTERNAL EDGES SHALL CONFORM TO  $R0.3 \pm 0.2$
- INTERNAL EDGES SHALL CONFORM TO  $R0.2$  MAX
- ITEM MAY BE ELASTICALLY CONSTRAINED DURING INSPECTION TO SATISFY DIMENSIONAL REQUIREMENTS

- 9 ( NOTE FOR INTEGRATION—MOUNTS FOR VELODYNE, AND #0.25-20 CAMERA )
- 10 ( NOTE FOR INTEGRATION—MOUNTS FOR HOKUYO, AND KINOVA, AND RISER STRUCTURE )
- 11 ( NOTE FOR INTEGRATION—HOLES MARKED 'A' NEED TO BE ENLARGED FOR KINOVA, AND RISER STRUCTURE )
- 12 ( NOTE FOR INTEGRATION—MOUNTS FOR MICROSTRAIN )
- 13 ( NOTE FOR INTEGRATION—MOUNTS FOR FLIR BLACKFLY )
- 14 ( NOTE FOR INTEGRATION—MOUNTS FOR STACK LIGHT )
- 15 ( NOTE FOR INTEGRATION—MOUNTS FOR OUSTER OS0 AND OS1 )

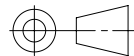


DETAIL A  
SCALE 5 : 1



TEMPLATE 020836-DTT\_11

THIRD ANGLE  
PROJECTION



UNLESS  
OTHERWISE  
SPECIFIED

UNITS ARE MILLIMETRES & GRAMS  
NOTES SUPERSEDE TITLE BLOCK  
CALLOUTS SUPERSEDE NOTES  
DIMENSIONS & TOLERANCES SHALL BE INTERPRETED  
IN ACCORDANCE WITH ASME Y14.5-2018



PROPRIETARY AND CONFIDENTIAL  
INFORMATION CONTAINED IN THIS DRAWING IS  
THE SOLE PROPERTY OF CLEARPATH ROBOTICS INC.  
PROHIBITED TO REPRODUCE IN PART OR AS A WHOLE WITHOUT  
WRITTEN PERMISSION OF CLEARPATH ROBOTICS INC.

DRAFT RF 29 NOV 2022

ITEM  
NAME

PLATE—80 X 80, ATTACHMENT INTERFACE

PAPER 432 X 279 SCALE 1:1 DO NOT SCALE

ITEM  
NUMBER

028859

SHEET 1 OF 1

REV.

2